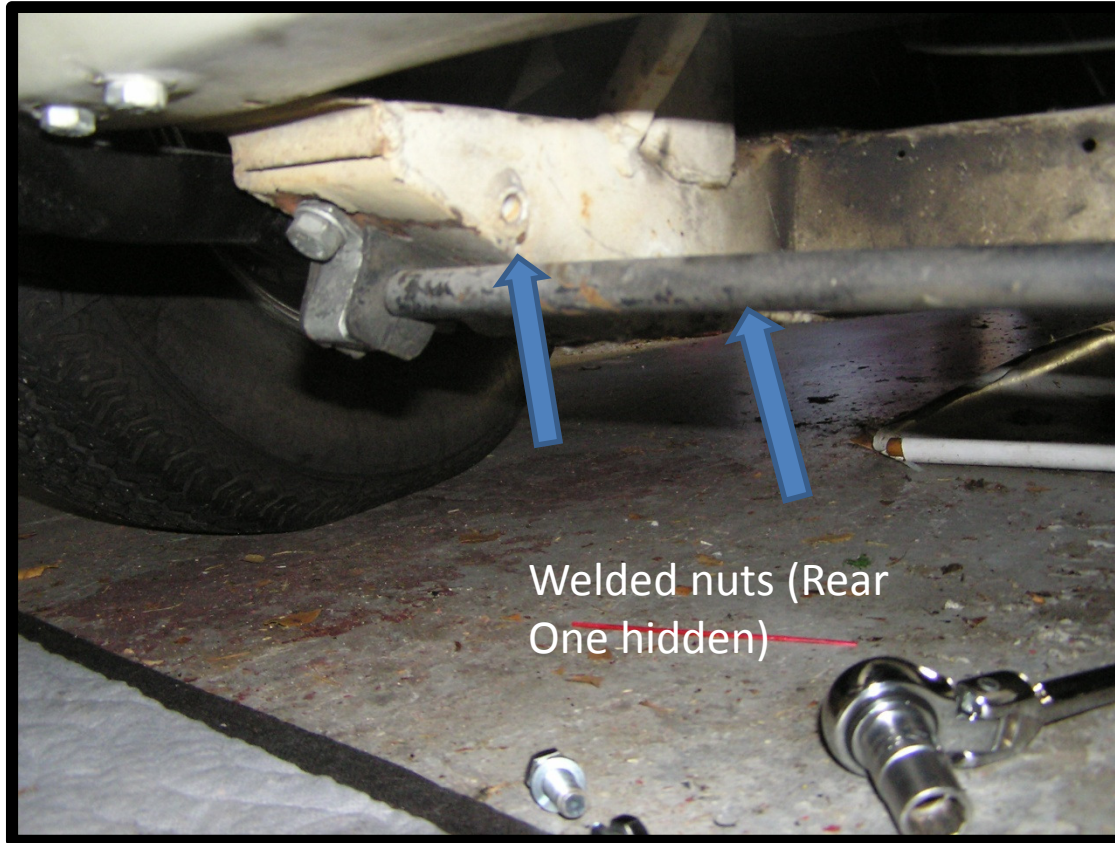


Tow Eyes and Tie Down Hooks



Tow Eye (Left) and Tie Down Hook (Right)

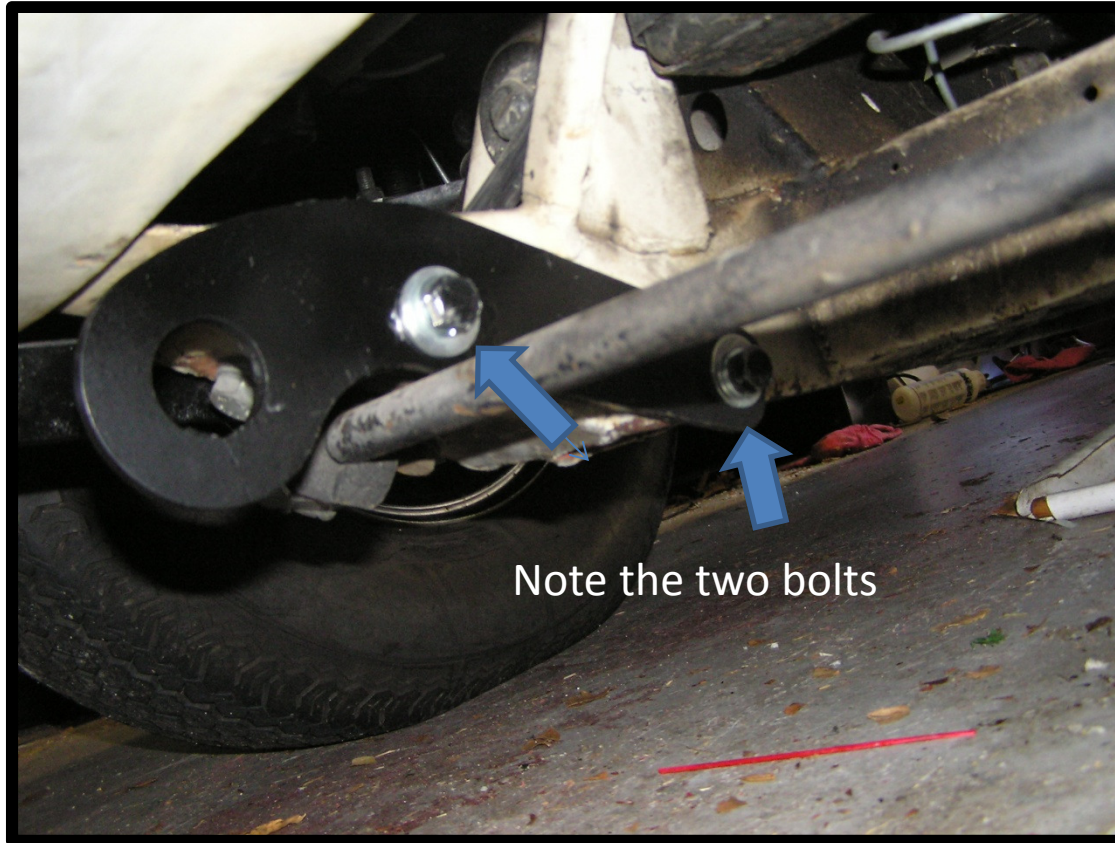
Before Installation of Tow eyes



Welded nuts (Rear
One hidden)

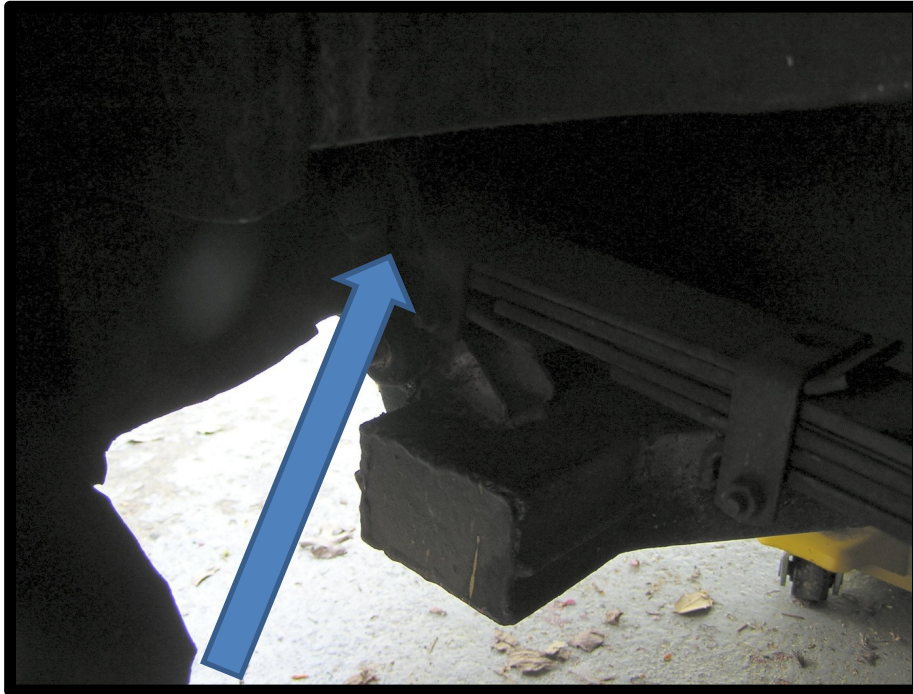
Note the welded nuts on the inner side of the frame member opposite of where the bumper bracket is bolted on.

After Installation of Tow Eyes



Washers not yet painted to better show the installation.

Before Installation of Tie Down Hooks



Arrow points to the Rear Spring Shackle Pin.

Remove the nut on the Rear Spring Shackle Pin

After Installation of Tie Down Hook



**Install the Tie Down Hook and replace the nut.
The Tie Down Hook may need to be modified slightly to fit.**