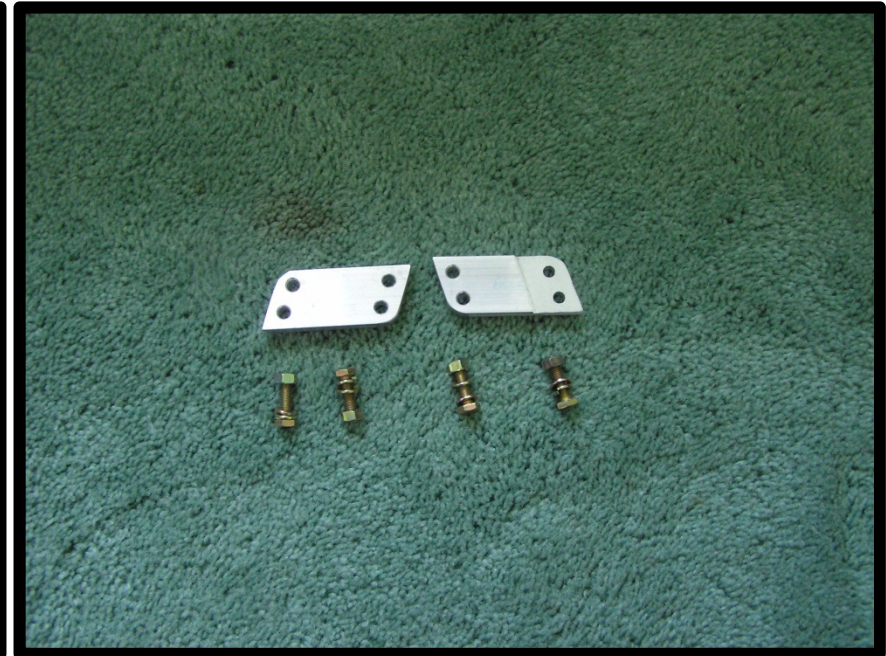


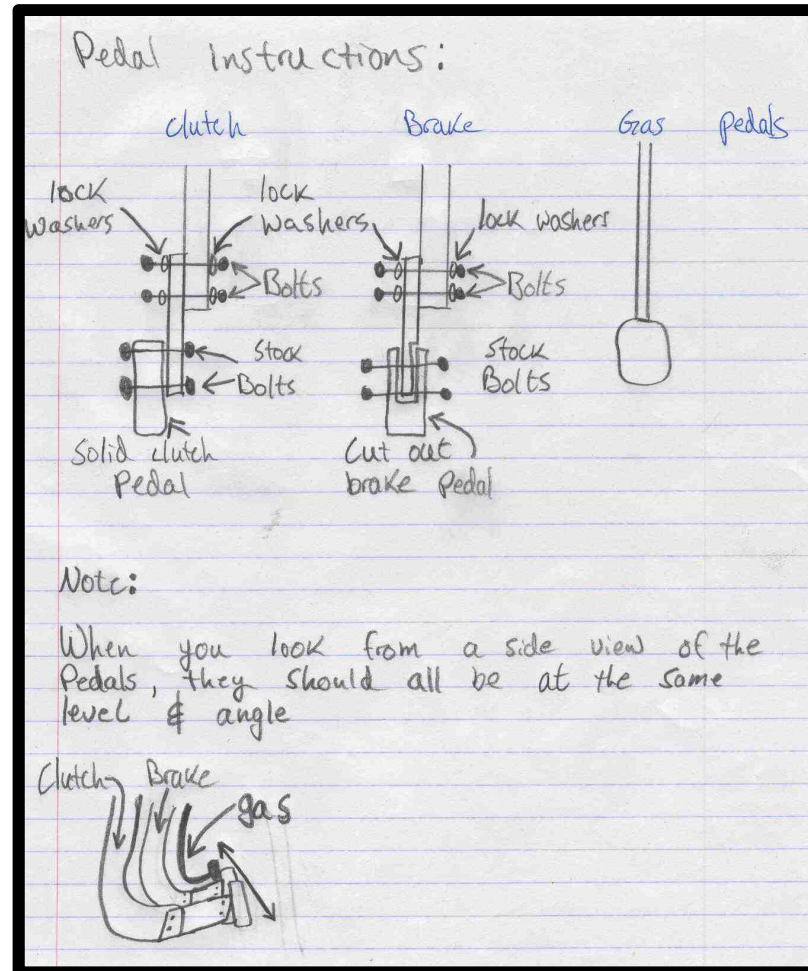
Installation of Brake and Clutch Extensions

Before Installation

Extenders as received from the Vendor. Additional hole sets were drilled at $\frac{1}{2}$ ", 1" and 1 $\frac{1}{2}$ " for more adjustment possibilities. (Not shown)



Vendors instructions



Extensions as painted



During Assembly



Final Installation

